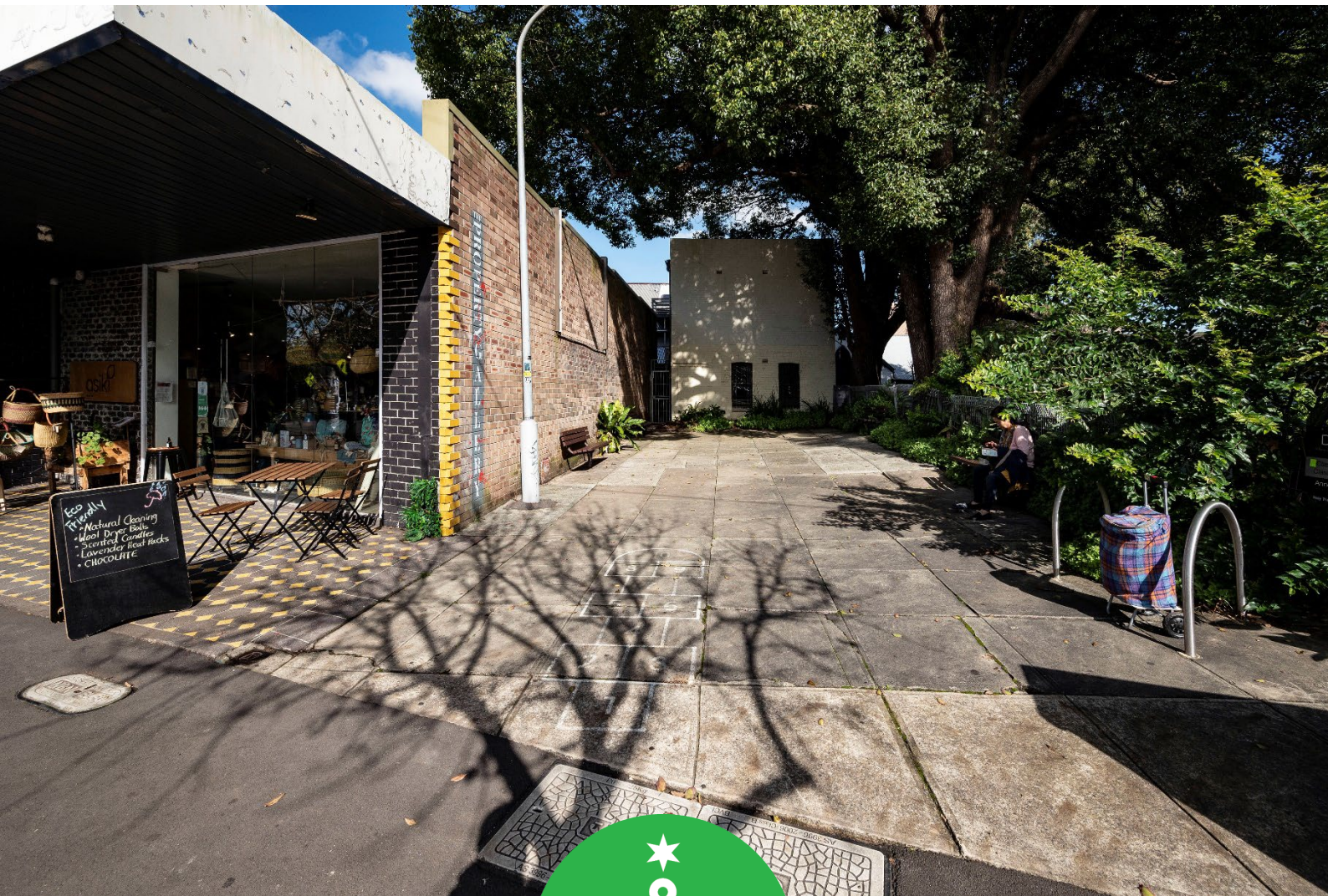


Attachment C

<h2>Engagement Report</h2>



Engagement report

Ada Villa Terrace. Erskineville

May 2024



Contents

Background	3
Engagement summary	4
Key findings	5
Engagement activities	10

Background

Over the next 10 years, we're upgrading more than 60 parks across the City of Sydney area, from small pocket parks to larger local parks.

Quality green open spaces are a high priority for our residents, workers and visitors. This network of park upgrades will create better quality open spaces for everyone to enjoy, help keep our city cooler, and support biodiversity in our local areas.

Prior to finalising the designs, we are consulting the community and stakeholders on these proposed park improvements. In 2023, we consulted on our stage 18 parks, which include:

- Robyn Kemmis Reserve, Glebe
- Minogue Reserve, Glebe
- **Ada Villa Terrace, Erskineville**
- Regent Street Reserve, Paddington
- Glebe Street Reserve, Glebe

Engagement summary

From 4 March to 1 April 2024, we asked the community for feedback on a concept plan to improve Ada Villa Terrace in Erskineville.

Consultation on the plan provided an opportunity for stakeholders and the community to review and comment on the design.

Consultation activities included online engagement, a letter to residents and project signage at the park.

This report outlines the community engagement activities that took place to support the consultation and summarises the key findings from the consultation.

Purpose of the engagement

The purpose of the engagement was to:

- gather feedback from stakeholders and the community about the proposed upgrade
 - determine the level of satisfaction with the revised concept design.
-

Outcomes from the engagement

Submissions received during consultation

We received a total of 49 submissions during the consultation period.

Forty-six via Survey Monkey and 3 via email.

The Sydney Your Say page was visited 1,176 times during the consultation period.

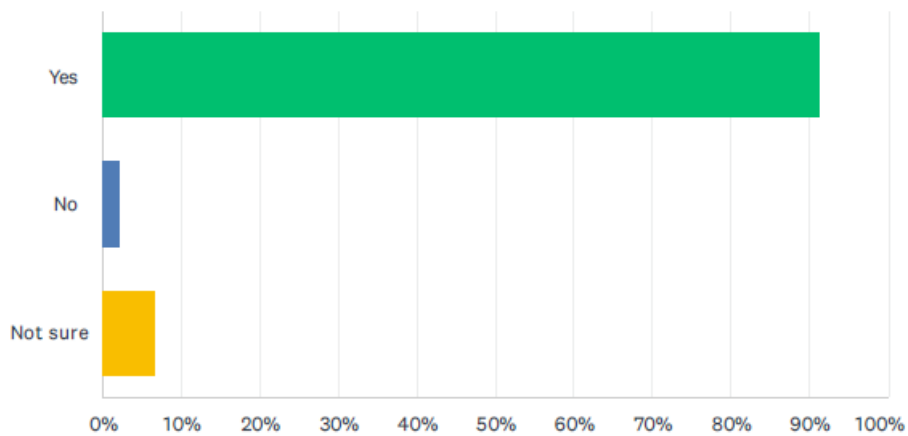
Key findings

Online feedback form - rating elements of the proposed upgrade

Respondents who completed the online feedback form were asked to rate how important elements of the proposed design were to them. The results are below:

Q1 Do you support the proposed improvements for Ada Villa Terrace?

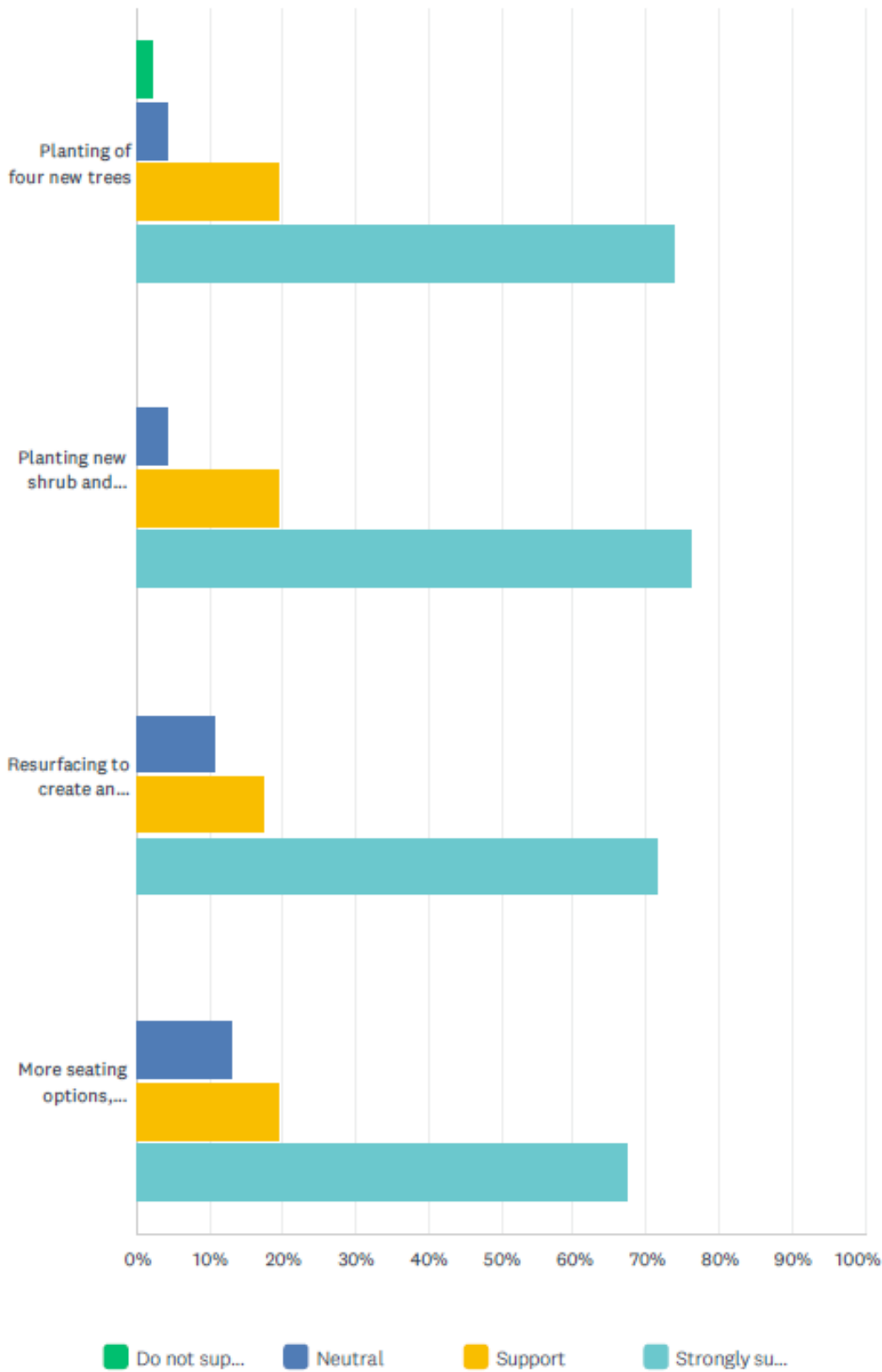
Answered: 46 Skipped: 0



ANSWER CHOICES	RESPONSES	
Yes	91.30%	42
No	2.17%	1
Not sure	6.52%	3
TOTAL		46

Q2 Do you support the following elements of the upgrade?

Answered: 46 Skipped: 0

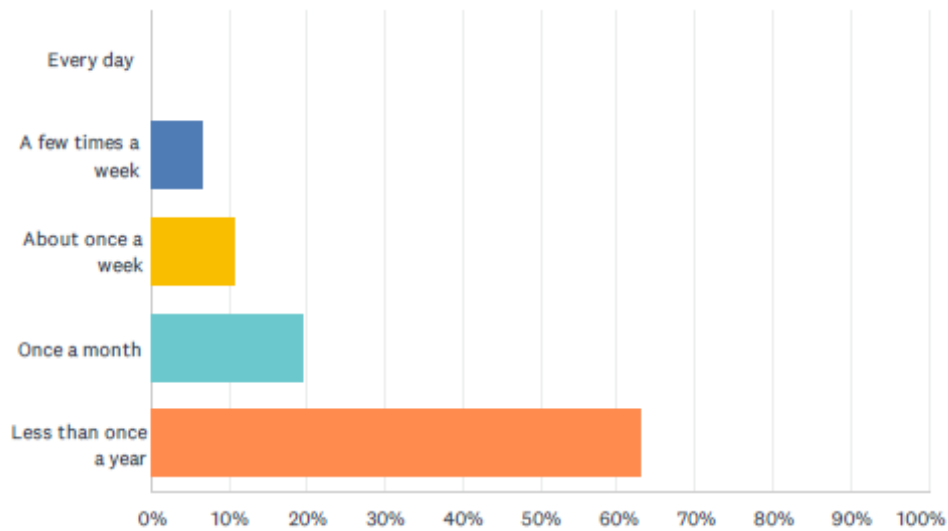


Engagement report

	DO NOT SUPPORT	NEUTRAL	SUPPORT	STRONGLY SUPPORT	TOTAL
Planting of four new trees	2.17% 1	4.35% 2	19.57% 9	73.91% 34	46
Planting new shrub and ground cover plants	0.00% 0	4.35% 2	19.57% 9	76.09% 35	46
Resurfacing to create an accessible, open space	0.00% 0	10.87% 5	17.39% 8	71.74% 33	46
More seating options, including a seat in memory of Terry Murphy	0.00% 0	13.04% 6	19.57% 9	67.39% 31	46

Q3 How often do you currently use the space?

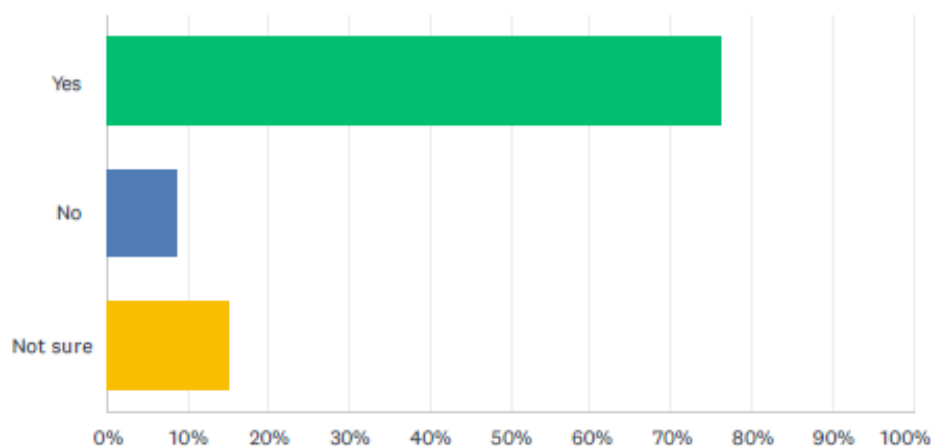
Answered: 46 Skipped: 0



ANSWER CHOICES	RESPONSES	
Every day	0.00%	0
A few times a week	6.52%	3
About once a week	10.87%	5
Once a month	19.57%	9
Less than once a year	63.04%	29
TOTAL		46

Q4 Do you think that the upgrade would change your use of the space?

Answered: 46 Skipped: 0



ANSWER CHOICES	RESPONSES	
Yes	76.09%	35
No	8.70%	4
Not sure	15.22%	7
TOTAL		46

Subjects/topics raised in submissions

Several subjects/topics were raised in the feedback received. These were presented as concerns, suggestions and/or requests and are summarised below.

General		
Comments	Total	City of Sydney Response
Including a drinking fountain with dog bowl	5	There are several existing drinking fountains/bubblers in the area. During detailed design the project will review feasibility of a drinking fountain.
Plant large trees in the space to offset those poisoned in the neighbouring site	3	There are four new trees proposed in the park design.
Only use native plants/trees on the site	2	The plants and tree species will be reviewed during the detailed design stage of the project. The final selection will align with the

Engagement report

		City's Urban Forest Strategy, Street Tree Master Plan, and Greening Sydney Strategy.
Consider soft fall for the surface so children can play in the space	1	As there is no play equipment within the design of the park, it is not necessary to incorporate a soft fall surface.
Consider a mural for the blank wall on the eastern edge. Perhaps by a First Nations artist	5	The wall is not owned by the City. A mural is not within the project scope.
Install planter boxes along the brick wall on the eastern edge to further green the space	1	The City will review installing garden beds with deep soil along the wall during the detailed design phase of the project.
Ensure the planting does not make the space dark and uninviting during the winter months	1	The plant and tree species selection will be reviewed during the detailed design stage of the project. Consideration will be given to selecting species that allow light into the site.
Smaller, flowering deciduous trees such as crepe myrtle should be considered	1	The tree species will be reviewed in the detailed design stage of the project.
The southeast corner may collect litter and should be addressed in the design	1	Litter collection will managed under the general maintenance for park.
More tables and seating should be included in the space	4	Additional tables and seating will be reviewed during the detail design
Planting should be considered to provide shade to the area as well as the footpath	2	The potential for strategic planting to provide shade to the park and surrounding footpaths is being explored to enhance visitor comfort. Four new trees are proposed. Locations will be reviewed in the detailed design of the project to review extent of shade.
Incorporate First Nations heritage and acknowledgement in the upgrade of this space and others throughout Erskineville, including language and signage in the park	2	The new park signage will incorporate acknowledgement of the traditional owners of the land. The City continues to explore meaningful ways to include Aboriginal heritage across our suburbs.
Including more active uses in the space such as large painted chess board, table tennis, tennis or boules	4	Incorporating larger active uses was considered however, due to size constraints they were not suitable for the space. A chess table has been included the space.
Include power outlets in the space so it could be used for food trucks/market stalls etc.	2	Incorporating in installing power outlets to facilitate events, food trucks, and market stalls was considered during the concept design however, it was deemed not suitable for the space.

Engagement report

		Power outlets will not be included in the space.
Include some play elements/playground in the space for children	2	Initial consultation indicated retention of existing use of the space was important. Structured children's play elements will not be included in the space.
Do not include anti-skate measures on any of the fixtures	1	The proposal does not include plans for anti-skate measures.
Install a public toilet on the site	1	The park was reviewed as a potential location for a public toilet serving the community in Erskineville. However, it was deemed unsuitable because of the limited size of the space. The City is currently reviewing possible locations for a public toilet in the area.
Retain the hopscotch court in the design	2	The hopscotch court will be removed to upgrade the pavement. The concrete pavement can be conducive to future hopscotch games.
Ensure the planting does not encourage mosquitoes to breed in the area	1	Plant species, including those that do not encourage mosquito breeding will be reviewed during the detailed phase of the project.
Install rubbish bins	1	The installation of a new rubbish bin will be reviewed during the detailed design stage of the project, including proximity of existing bins in the area.
Install a raised stage space for buskers to use	1	The space has been designed to enable possible small pop-ups a permanent stage for buskers will not be included in the design.
Upgrade the lighting	1	Existing lighting conditions will be reviewed during the detailed design phase of the project.

Pop up information session

A pop-up consultation feedback session was held on Tuesday 19 March from 4pm to 5:30pm.

Council staff were available to answer questions and obtain feedback about the proposed concept plan. Approximately 12 residents attended this session.

Feedback from this session is captured in the table above.

Early consultation feedback

Prior to undertaking general community consultation on the proposal, the City undertook some early consultation work in mid-2023 to ask local residents how often they use the park and what they would like to see in the new design.

149 responses were received during the pre-consultation period. Ideas and suggestions helped to shape the Concept Plan. Key themes from the pre-consultation were:

- Descriptions of the park as dilapidated, underutilised, and lacking purpose, with requests for enhancing the attractiveness of the space through upgraded paving and increased greenery.
- Critiques of insufficient amenities, such as limited seating and a water fountain.
- Concerns over the unwelcoming atmosphere due to neglect and inadequate landscaping, with suggestions of establishing a flexible area for market stalls or coffee carts.
- Safety issues, including poor lighting at night and perceptions of being enclosed rather than open to the public, with requests to improve sightlines and passive surveillance within the reserve and enhance accessibility throughout the reserve.
- Incorporating public art with suggestions of erecting a memorial in honour of Terry Murphy.

Engagement activities

Overview of engagement

1. Sydney Your Say webpage

A Sydney Your Say webpage, <https://www.cityofsydney.nsw.gov.au/proposed-works-maintenance/your-feedback-proposed-design-ada-villa-terrace-erskineville> was created. The page included an electronic copy of the revised concept design, survey and other key information about the consultation.

2. Online feedback form via Survey Monkey

The community and stakeholders were able to give feedback using an online feedback form. A link to the feedback form was provided on the Sydney Your Say website.

3. Consultation letter

A letter was posted to residents, inviting them to give feedback on the proposal. 422 letters were distributed.

4. Community pop up session

A pop-up consultation feedback session was held on Tuesday 19 March from 4pm to 5:30pm.

5. Signage

Two signs were placed in the park directing people online to leave their feedback.

6. Stakeholder email

151 stakeholder emails were sent at the start of the consultation to people who had completed surveys during early consultation.

Friends of Erskineville community group and the family of Terry Murphy were also contacted when the consultation began.